

CROSS WRAP BALE DEWIRING IN SWITZERLAND REFERENCE | POLY RECYCLING

> Swiss based plastic recycling company Poly Recycling invested in automatic Cross Wrap Bale Dewiring to improve their PET infeed capacity, working safety and process automation.

POLY RECYCLING AG – EUROPEAN SUCCESS STORY

Swiss based PET recycling company Poly Recycling AG has been founded in 1975 and it has grown to be one of the most successful plastic-recycling companies in Europe.

The company's budgeted output is more than 25 000 tons per year and the feedstock are mainly collected from the Swiss and neighboring countries.

The company's finished products consist mostly of PET regrind and pellets that are used by many international plastic processors who make bottles, films and strapping tapes. The company's output has increased in packaging, which is used in circular economy systems and in specially engineered plastics.

PRODUCTION LINE UPDATE

As a part of production line update in the year 2018 the company invested in automatic Cross Wrap Bale Dewiring machine, which was delivered in December 2018. The machine was installed to improve and to automate the PET infeed and working safety at Bilten, Canton Glarus PET recycling plant.

This new recycling line together with CW Bale Dewiring sets new standards in terms of safety, production quality and traceability in the production process. The new process ensures also a very environmentally friendly PET recycling.

PET INFEEED PROS FROM CW DEWIRING

Poly Recycling's raw material stock and process infeed consists of tightly baled and metal wire tied PET-bottle bales, that are approximately 110 x 70 x 60 centimeters in size. The recycling plants production line infeed capacity is 20 bales per hour, which is easily maintained with CW Dewiring machine model DW1400.

There are many operational benefits now when the PET material infeed and bale dewiring is done automatically with a machine. - Now dangerous bale wire cutting is done safely with a special Dewiring machine. This helps to improve working safety; Mr. Casper Van Den Dungen the CEO of Poly Recycling says.

The machine also separates and coils the metal wires away from the PET material stream, which keeps the recycling and production line running more effectively. The fully automatic Dewiring operation also lessens production costs and machinery wear as well as improves the overall efficiency.

Pros come also as the CW Dewiring machine coils the metal bale wires into a tight bundle. - Now the wires are much easier to handle and store in our process, Mr. Van Den Dungen rejoices.

- In our case the CW Dewiring has been a cherry on top of our cake as we want to be among the first European PET recyclers who adapt the latest technical innovations. We want to boost working safety and production efficiency, and for now we can certainly say that this has come true by choosing Cross Wrap Dewiring, Mr. Van Den Dungen closes.

IN A NUTSHELL:

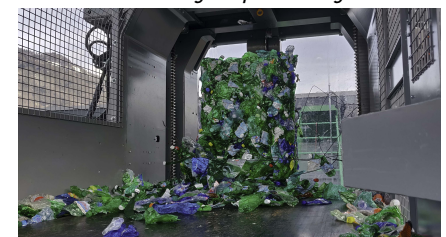
Company: Poly Recycling AG
Material: PET-plastic
Output: 25 000 tons per year
Capacity: 20 Bales / Hour
Bale Size: 110 x 70 x 60 cm
CW Machine: DW 1400, Bale Dewiring

www.polyrecycling.com
www.crosswrap.com

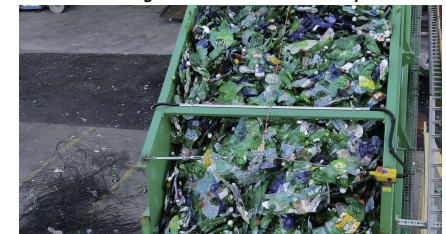
DEWIRING AS A PROCESS:



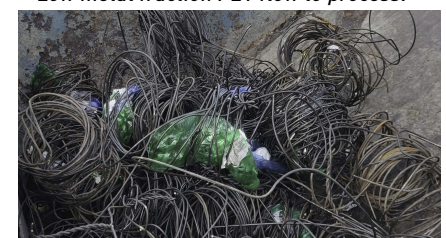
> PET-Bales waiting for processing.



> CW Dewiring machine automatic operation.



> Low metal fraction PET flow to process.



> Separated and coiled metal wires are easy to handle.